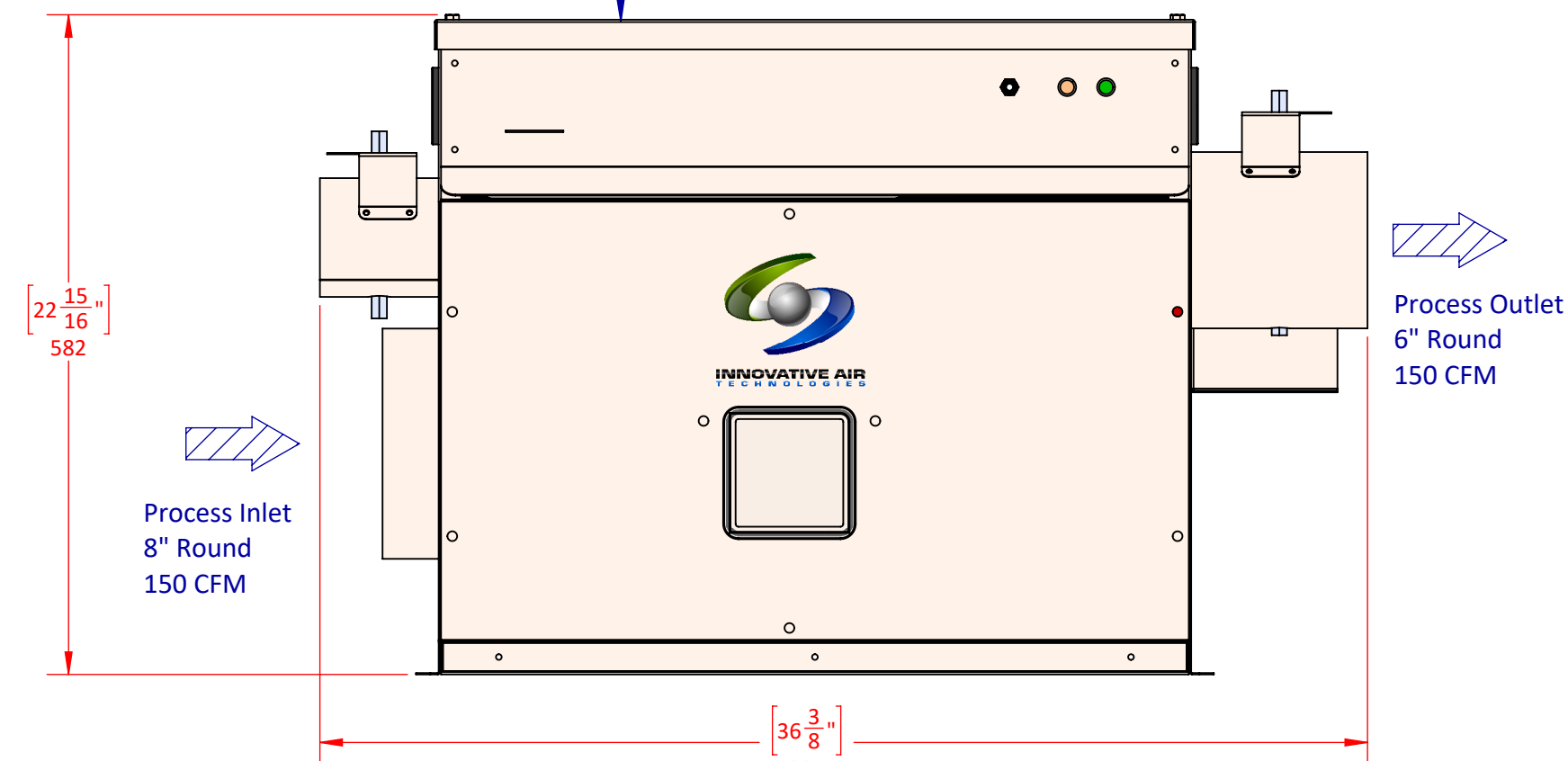


TOP VIEW

19" Minimum Clearance
for Desiccant Rotor Access

24" Minimum Clearance
for Control Panel Access



FRONT VIEW

SPECIFICATIONS:

- PROCESS AIR FLOW: 150 CFM
- REACTIVATION AIR FLOW: 50 CFM
- REACTIVATION HEAT: 9,725 BTUH
- TOTAL POWER CONSUMPTION: 3,850 WATTS
- DESICCANT ROTOR: SILICA GEL

TYPICAL PERFORMANCE:

- 75 DEG. F @ 50%RH - 5.0 LBS/HR.
- 75 DEG. F @ 30%RH - 3.2 LBS/HR.
- 75 DEG. F @ 10%RH - 1.0 LBS/HR.

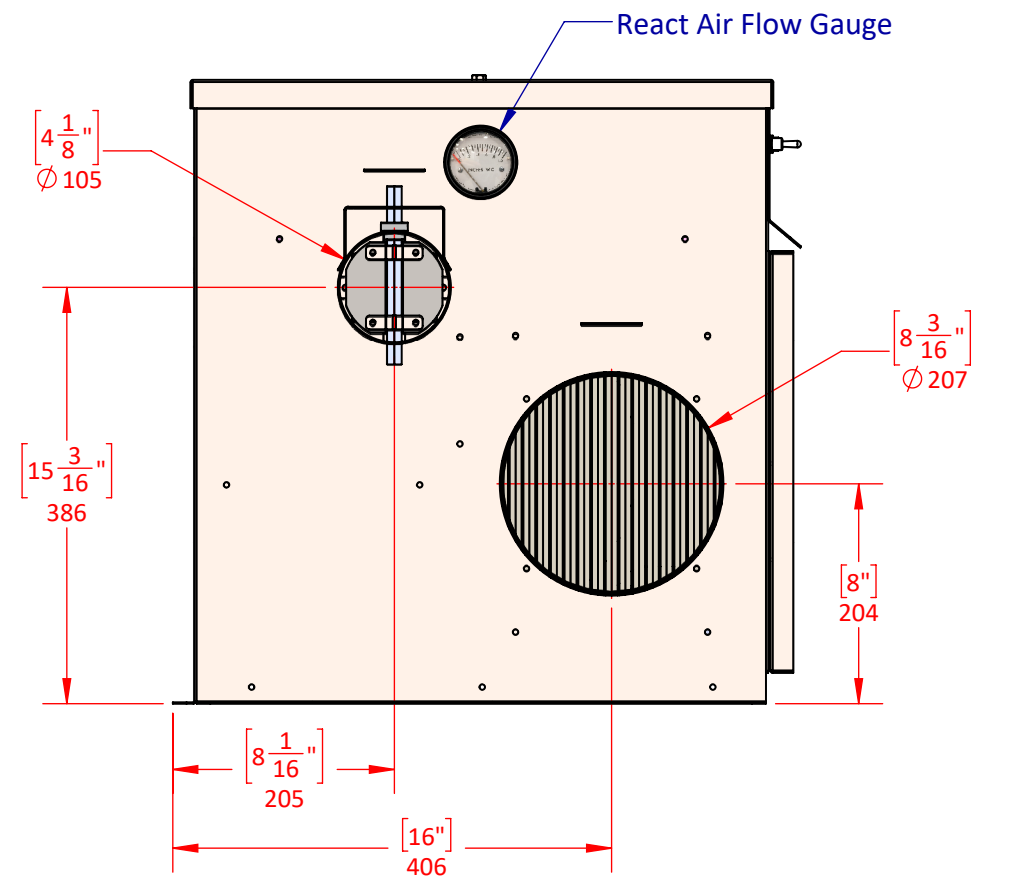
GENERAL NOTES:

1. STAINLESS STEEL CONSTRUCTION.
2. REACT & PROCESS OUTLETS EQUIPPED WITH AIR VOLUME DAMPERS.
3. 30% REPLACEABLE FILTER.
4. ALLOW A MINIMUM OF 5% MAKE UP AIR ON PROCESS INLET.
5. SILICA GEL DESICCANT IS EMBEDDED IN ROTATING WHEEL.

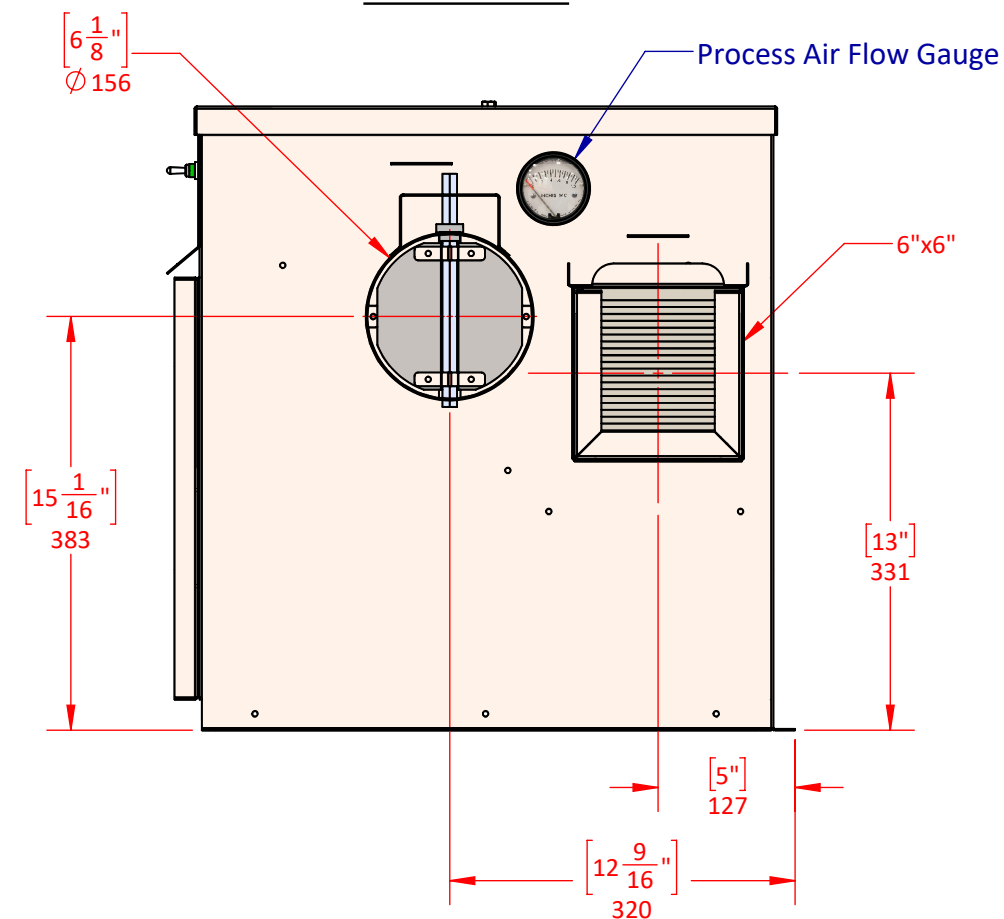


THE INFORMATION CONTAINED IN THIS DRAWING IS THE SOLE
PROPERTY OF INNOVATIVE AIR TECHNOLOGIES, INC. ANY PARTIAL OR
COMPLETE REPRODUCTION WITHOUT THE WRITTEN PERMISSION OF
INNOVATIVE AIR TECHNOLOGIES, INC. IS PROHIBITED.

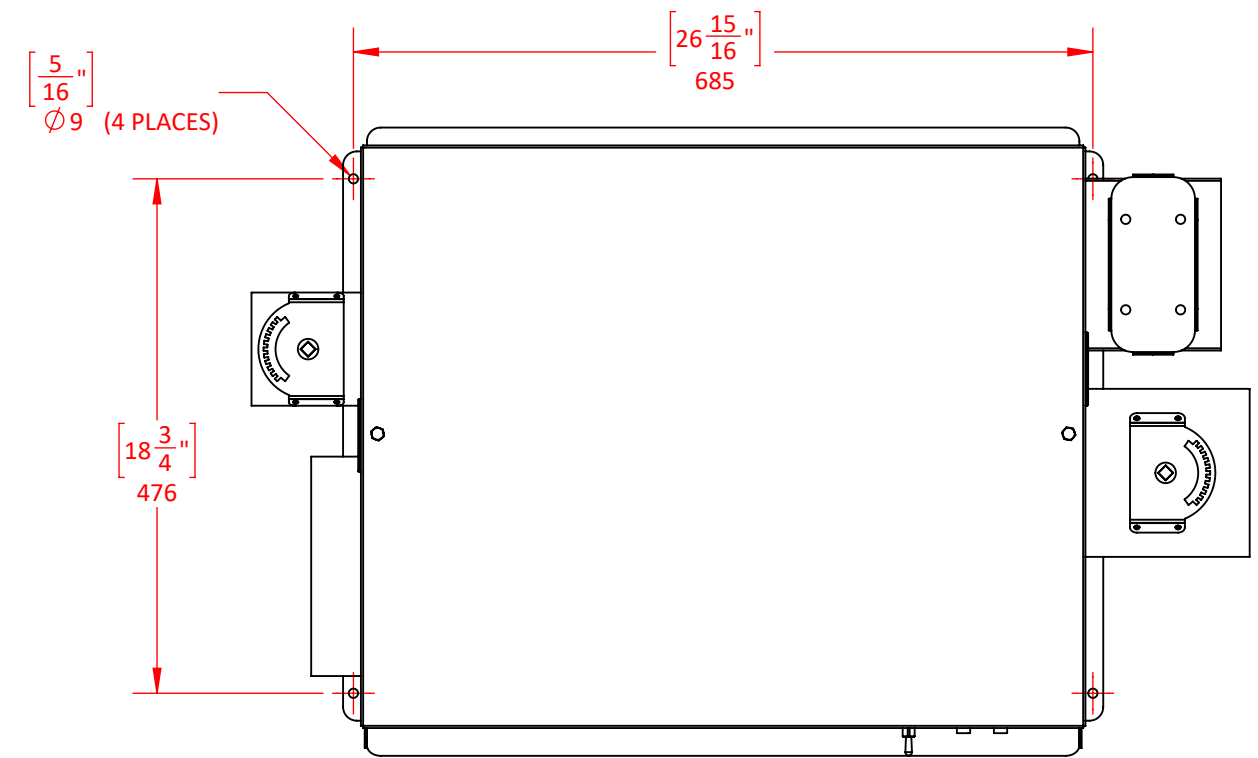
| | | | |
|--|--------------------|---------------------|--|
| PROJECT: 150RE COMPACT - UNIT OUTLINE | | | |
| TITLE: IAT-150RE | | | |
| DWG NO: N/A | WEIGHT: 165 LBS | | |
| DRAWN BY: JP | CHECK BY: KO | DATE: 07/23/2020 | |
| SIZE: B | SCALE: 1:8 | SHEET: 1 OF 2 | |



LH SIDE VIEW



RH SIDE VIEW



**MOUNTING LOCATION DETAIL
(TOP VIEW)**



| | | | |
|--|--------------------|---------------------|--|
| PROJECT: 150RE COMPACT - UNIT OUTLINE | | | |
| TITLE: IAT-150RE | | | |
| DWG NO: N/A | WEIGHT: 165 LBS | | |
| DRAWN BY: JP | CHECK BY: KO | DATE: 07/23/2020 | |
| SIZE: B | SCALE: - | SHEET: 2 OF 2 | |