

SPECIFICATIONS:

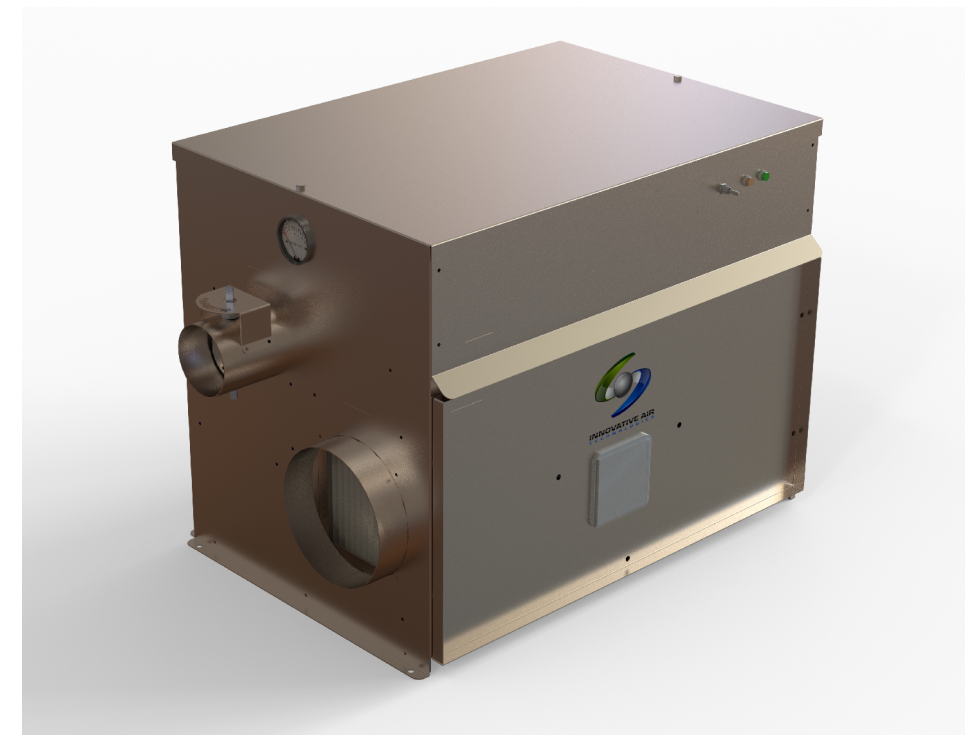
- PROCESS AIR FLOW: 300 CFM
- REACTIVATION AIR FLOW: 100 CFM
- REACTIVATION HEAT: 19,448 BTUH
- TOTAL POWER CONSUMPTION: 6,900 WATTS
- DESICCANT ROTOR: SILICA GEL

TYPICAL PERFORMANCE:

- 75 DEG. F @ 50%RH - 8.9 LBS/HR.
- 75 DEG. F @ 30%RH - 5.9 LBS/HR.
- 75 DEG. F @ 10%RH - 2.0 LBS/HR.

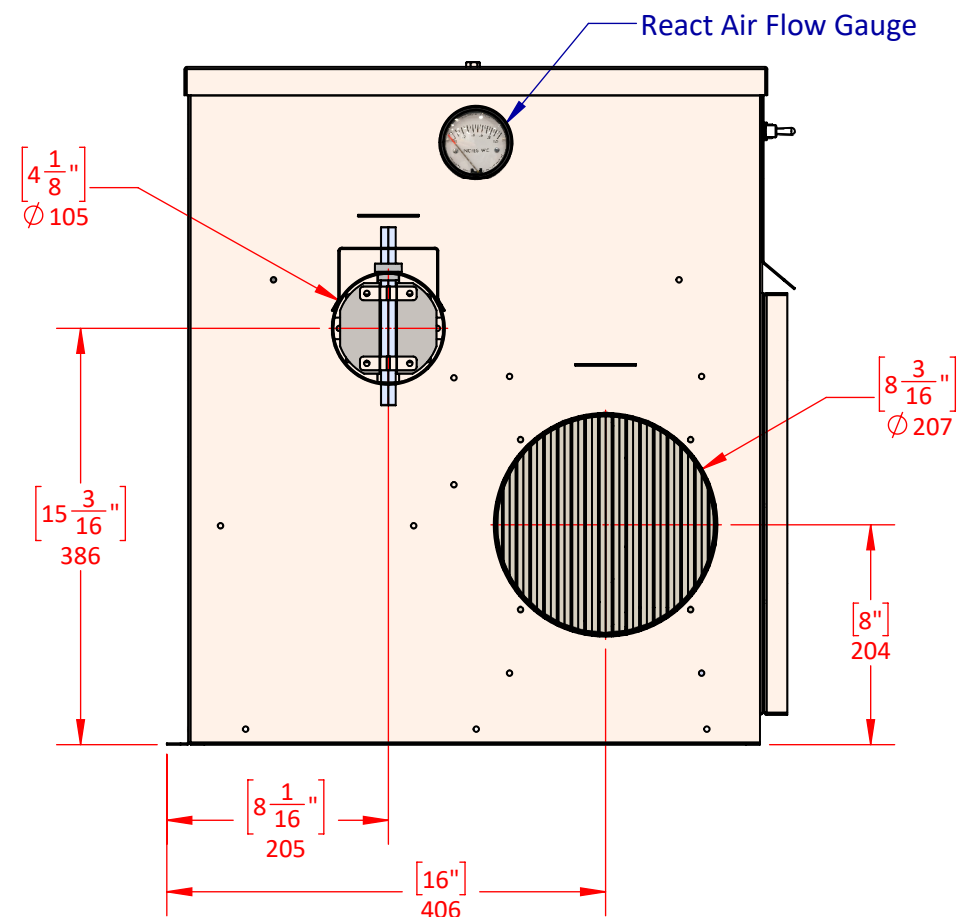
GENERAL NOTES:

1. STAINLESS STEEL CONSTRUCTION.
2. REACT & PROCESS OUTLETS EQUIPPED WITH AIR VOLUME DAMPERS.
3. 30% REPLACEABLE FILTER.
4. ALLOW A MINIMUM OF 5% MAKE UP AIR ON PROCESS INLET.
5. SILICA GEL DESICCANT IS EMBEDDED IN ROTATING WHEEL.

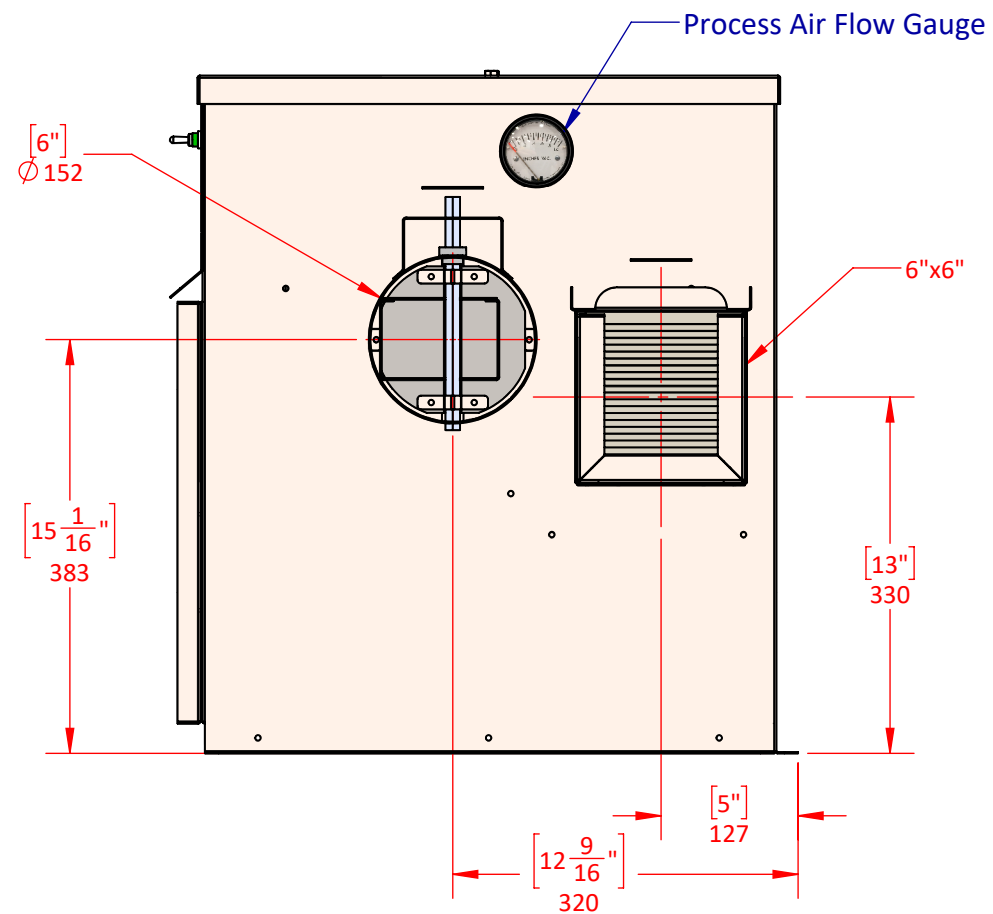


THE INFORMATION CONTAINED IN THIS DRAWING IS THE SOLE PROPERTY OF INNOVATIVE AIR TECHNOLOGIES, INC. ANY PARTIAL OR COMPLETE REPRODUCTION WITHOUT THE WRITTEN PERMISSION OF INNOVATIVE AIR TECHNOLOGIES, INC. IS PROHIBITED.

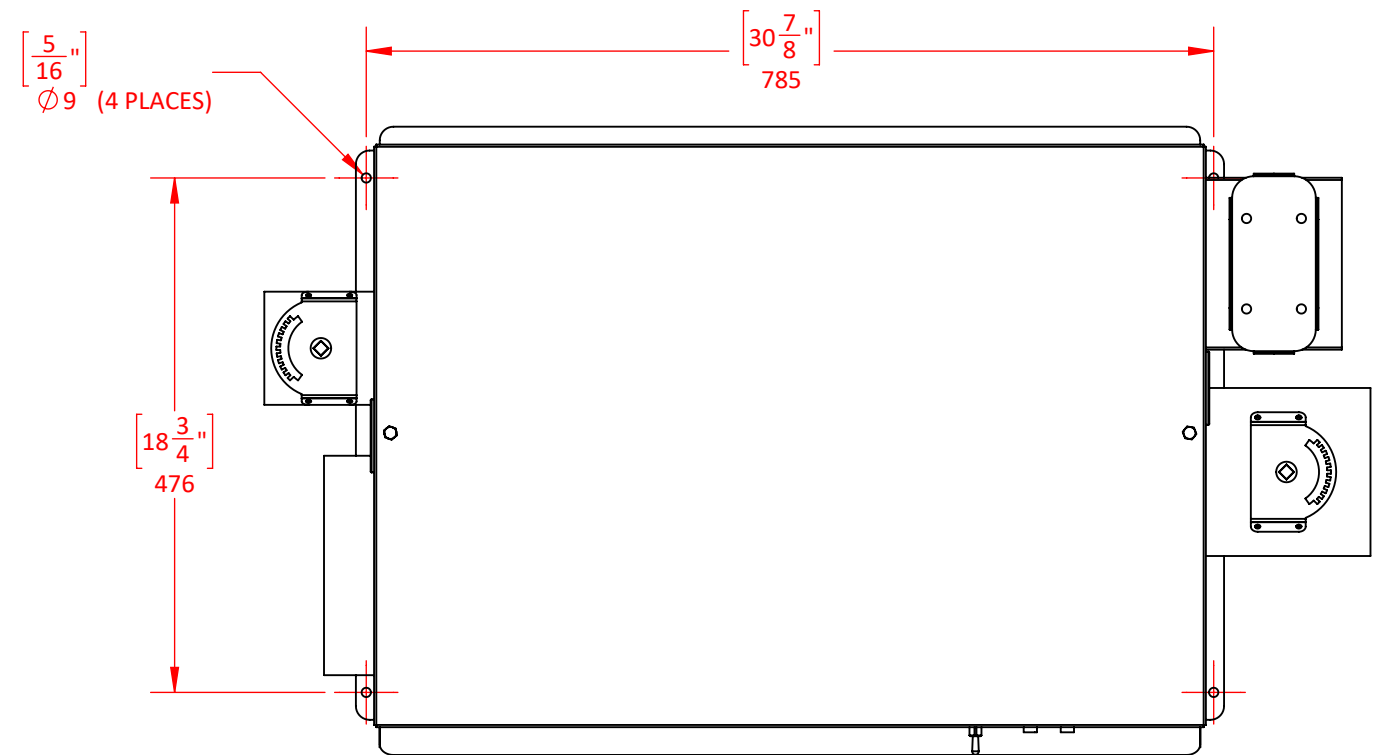
PROJECT: 300RE COMPACT - UNIT OUTLINE			
TITLE: IAT-300RE			
DWG NO: N/A	WEIGHT: 185 LBS		
DRAWN BY: JP	CHECK BY: KO	DATE: 07/09/2020	
SIZE: B	SCALE: 1:8	SHEET: 1 OF 2	



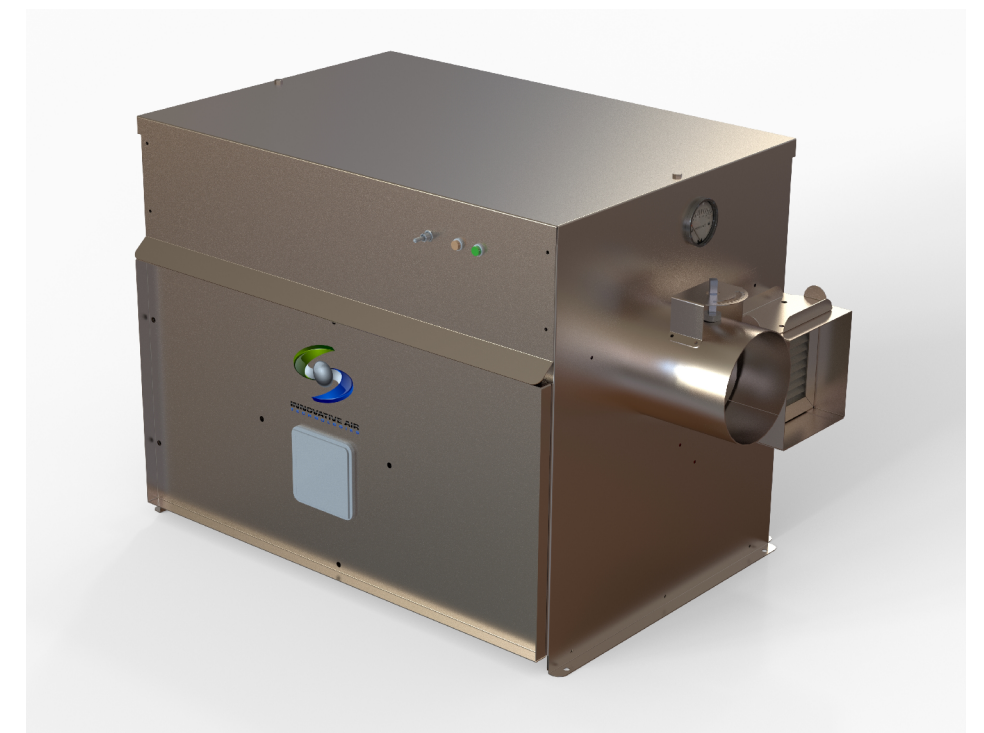
LH SIDE VIEW



RH SIDE VIEW



MOUNTING LOCATION DETAIL
(TOP VIEW)




**INNOVATIVE AIR
TECHNOLOGIES**
16200 GEORGIA PEACH AVE - COVINGTON, GA 30014
PHONE: (770) 788-6744 | www.dehumidifiers.com

THE INFORMATION CONTAINED IN THIS DRAWING IS THE SOLE
PROPERTY OF INNOVATIVE AIR TECHNOLOGIES, INC. ANY PARTIAL OR
COMPLETE REPRODUCTION WITHOUT THE WRITTEN PERMISSION OF
INNOVATIVE AIR TECHNOLOGIES, INC. IS PROHIBITED.

PROJECT: 300RE COMPACT - UNIT OUTLINE			
TITLE: IAT-300RE			
DWG NO: N/A	WEIGHT: 185 LBS		
DRAWN BY: JP	CHECK BY: KO	DATE: 07/09/2020	
SIZE: B	SCALE: -	SHEET: 2 OF 2	